

Prepared For —  
City of Port Lincoln

Project —  
17.029

Issue 03 —  
09-08-2017

# Port Lincoln Parnkalla Trail Wharf Precinct

Concept Design

oxygen

Oxygen Pty Ltd  
98-100 Halifax Street  
Adelaide SA 5000

T +61 (08) 7324 9600  
design@oxygen.net.au  
oxygen.net.au



# Port Lincoln Foreshore & Parnkalla Trail Masterplan

## Main Wharf to Axel Stenross Maritime Museum





# Wharf Precinct Trail Overview



- 01

EXISTING EXPOSED AGGREGATE PATH - LEAVE AS IS.
- 02

NEW 1800 FENCE TO MATCH INTO EXISTING. EXTEND FENCE ALONG RAILWAY LINE TO THE PEDESTRIAN CROSSING POINT.
- 03

BOARDWALK WITH BALUSTRADE TO WIDEN TRAIL - AIM FOR 3.0M WIDE WIDTH, MAY NEED TO BE LESS TO REDUCE CANTILEVER.
- 04

EXISTING BUND REMOVED TO IMPROVE LEVELS AND TRAIL SURFACE. NEW BALUSTRADE.
- 05

TRAIL NODE VIEWING AREA WITH SEATING, SMALL SHELTER AND INTERPRETIVE SIGNAGE. TIMBER UPSTAND TO WHARF EDGE.
- 06

END OF JETTY NODE AND 'WELCOME TO PORT LINCOLN' MESSAGE TO WELCOME OVERSEAS VISITORS AND ORIENTATION TO THE TRAIL.

- 07

REALIGNED AND DEFINED PEDESTRIAN CROSSING WITH SIGNAGE & BARRIERS. FIT INTO EXISTING TRAFFIC ISLAND.
- 08

IMPROVED TRAIL SURFACE AND WIDTH (2.5M) ALONG CAR PARK EDGE - CONCRETE OR HOTMIX WITH DEFINED EDGES. NEW FENCE TO REPLACE EXISTING MESH FENCING - CHECK HEIGHT WITH FLINDERS PORT. MINOR ADJUSTMENTS TO CAR PARKING LAYOUT.
- 09

REMOVE EXISTING SMALL TREE AND DEFINE VEHICLE ENTRY INTO CAR PARK
- 10

UTILISE EXISTING PIPERAIL FENCING TO TRAIL NODE, EXISTING MEMORIAL INCORPORATED. SIGNAGE TO MARK CROSSING.
- 11

BOARDWALK CROSSING AT THE HISTORIC "TROUBRIDGE FERRY" DOCKING POINT. OPPORTUNITY FOR INTERPRETIVE SIGNAGE AND USER INTERACTION.

- 12

DEFINE TRAIL THROUGH THE CAR PARK AREA WITH LINEMARKING & SIGNAGE TOTEMS OR OTHERWISE AT EACH END.
- 13

NEW TRAIL SURFACE WITH SEATING NODES. EXISTING VEGETATION REMOVED/ MANAGED. IMPROVEMENTS TO THE ROCK REVETMENT AS NECESSARY, OPPORTUNITIES FOR INTERPRETATION. POSSIBLE RE-USE OF INDUSTRIAL RELICS AS SEATS AND WAYFINDING DEVICES.
- 14

INVESTIGATE OPPORTUNITIES TO MAKE MINOR ALTERATIONS TO ROAD ALIGNMENT AND STORMWATER INLET TO ENABLE WIDER TRAIL THROUGH 'PINCH POINT'. NEW BARRIER TO SEPARATE VEHICLES AND PEDESTRIANS. POSSIBLE OPPORTUNITY FOR VIEWING PLATFORM TO ALSO ASSIST IN THE WIDENING OF THE TRAIL AT THIS POINT.
- 15

NEW TRAIL SURFACE. IMPROVEMENTS TO THE ROCK REVETMENT AS NECESSARY,

- 16

INVESTIGATE OPTIONS FOR WIDENING THE EXISTING BRIDGE ACROSS THE FUEL PIPELINE.
- 17

NEW TRAIL SURFACE. RETAIN EXISTING CONCRETE PLINTH ON BOUNDARY. REPLACE EXISTING CYCLONE FENCING IN POOR CONDITION TO STORAGE YARD IF REQUIRED OR REMOVE.
- 18

NEW NODE AT END OF JETTY WITH SEATING AND INTERPRETIVE / WAYFINDING SIGNAGE. SMALL MEETING/ COLLECTION POINT WITH VIEWS. MAKE CONNECTION TO THE TRAIL ESTABLISHED EAST OF THE WHARF PRECINCT.

N

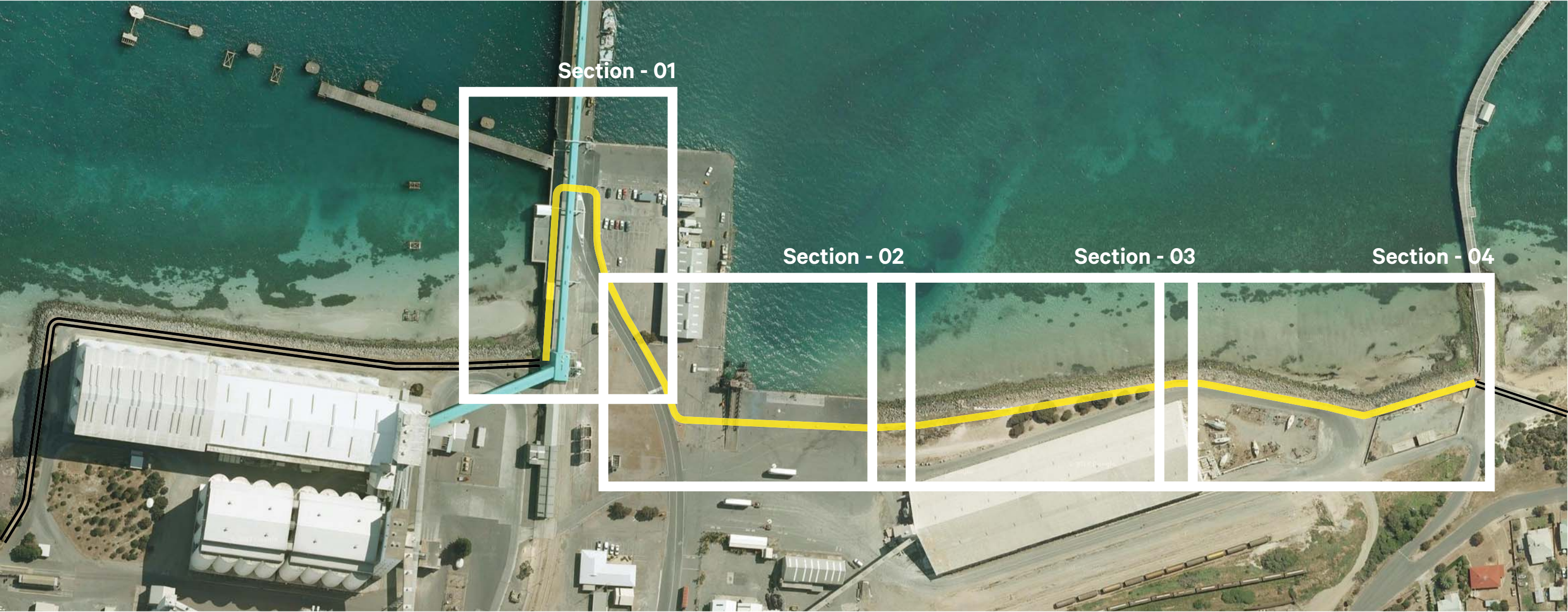
EXISTING TRAIL

NEW TRAIL

NOTE:  
PROPOSED NEW ALIGNMENT FOR THE TRAIL' AN AMENDMENT TO THE AGREEMENT FOR PUBLIC ACCESS WITH FLINDERS PORTS MAY BE REQUIRED.



# Key Plan



  EXISTING TRAIL  
 NEW TRAIL



# Section - 01



## KEY ELEMENTS

- 01

TRAIL AND WHARF PRECINCT MARKER
- 02

BOARDWALK WITH BALUSTRADE TO WIDEN TRAIL - AIM FOR 3.0M WIDE WIDTH, MAY NEED TO BE LESS TO REDUCE CANTILEVER.
- 03

EXISTING BUND REMOVED TO IMPROVE LEVELS AND TRAIL SURFACE. NEW BALUSTRADE.
- 04

TRAIL NODE VIEWING AREA WITH SEATING, SMALL SHELTER AND INTERPRETIVE SIGNAGE. TIMBER UPSTAND TO WHARF EDGE.
- 05

EXISTING SUBSTATION BUILDING RETAINED FOR POSSIBLE RE-USE - POP-UP/ACTIVATION. EXPRESS HERITAGE FEATURES. SUBJECT TO FURTHER INVESTIGATIONS.
- 06

END OF JETTY NODE AND 'WELCOME TO PORT LINCOLN' MESSAGE TO WELCOME OVERSEAS VISITORS AND ORIENTATION TO THE TRAIL. NEW SLIDING GATE TO FACILITATE VISITOR ACCESS FROM CRUISE SHIPS.
- 07

REALIGNED AND DEFINED PEDESTRIAN CROSSING WITH SIGNAGE, BARRIERS & BOLLARDS AT PATH ENTRY POINTS FINAL CROSSING LOCATION TO BE CONFIRMED ONSITE.
- 08

END OF RAIL AND BUFFER RELOCATED TO FACILITATE NEW PEDESTRIAN CROSSING
- 09

IMPROVED TRAIL SURFACE AND WIDTH (3.0M) ALONG CAR PARK EDGE - CONCRETE OR HOTMIX WITH DEFINED EDGES. NEW FENCE TO REPLACE EXISTING MESH FENCING. MINOR ADJUSTMENTS TO CAR PARKING LAYOUT.
- 10

REMOVE EXISTING SMALL TREE AND DEFINE VEHICLE ENTRY INTO CAR PARK
- NEW TRAIL SURFACE - HOTMIX
- NEW TRAIL SURFACE - CONCRETE
- BOARDWALK
- PEDESTRIAN ROAD CROSSING WITH LINEMARKING
- NEW 1000 HIGH STEEL BALUSTRADE
- NEW 1800 HIGH TIMBER BLADE FENCE
- NEW 1000 HIGH UTILITARIAN FENCING WITH TIMBER POSTS
- EXISTING PIPERAIL FENCING
- NEW RECYCLED JETTY TIMBER UPSTANDS
- SIGNAGE / WAYFINDING / INTERPRETATION





**VIEW 01 EXISTING**





**VIEW 01 PROPOSED**





**VIEW 02 EXISTING**





**VIEW 02 PROPOSED**





**VIEW 03 EXISTING**





**VIEW 03 PROPOSED**

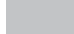







# Section - 02



## KEY ELEMENTS

- 01** NEW TRAIL SURFACE. UTILISE EXISTING PIPERAIL FENCING
- 02** TRAIL NODE. EXISTING MEMORIAL INCORPORATED. SIGNAGE TO MARK CROSSING. RELOCATE LIGHT OFF TRAIL. REPAVE MEMORIAL NODE AND INCORPORATE MEMORIAL STONE TO ENGAGE WITH THE TRAIL.
- 03** DEFINE TRAIL ACROSS ROAD WITH LINEMARKING & SIGNAGE TOTEMS OR OTHERWISE AT EACH END.
- 04** BOARDWALK CROSSING AT THE HISTORIC "TROUBRIDGE FERRY" DOCKING POINT. OPPORTUNITY FOR INTERPRETIVE SIGNAGE AND USER INTERACTION.
- 05** REDEFINE ROADWAY LINEMARKING
- 06** NEW TRAIL SURFACE. BOLLARD TO PREVENT VEHICLE ACCESS TO NEW TRAIL SURFACE - REFER SECTION 03.

-  NEW TRAIL SURFACE
-  BOARDWALK
-  PEDESTRIAN ROAD CROSSING
-  EXISTING PIPERAIL FENCING
-  SIGNAGE / WAYFINDING / INTERPRETATION
-  PAVED MEMORIAL AREA INCORPORATED INTO TRAIL





**VIEW 04 EXISTING**





**VIEW 04 PROPOSED**





**VIEW 05 EXISTING**



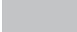








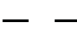


**VIEW 05 PROPOSED**



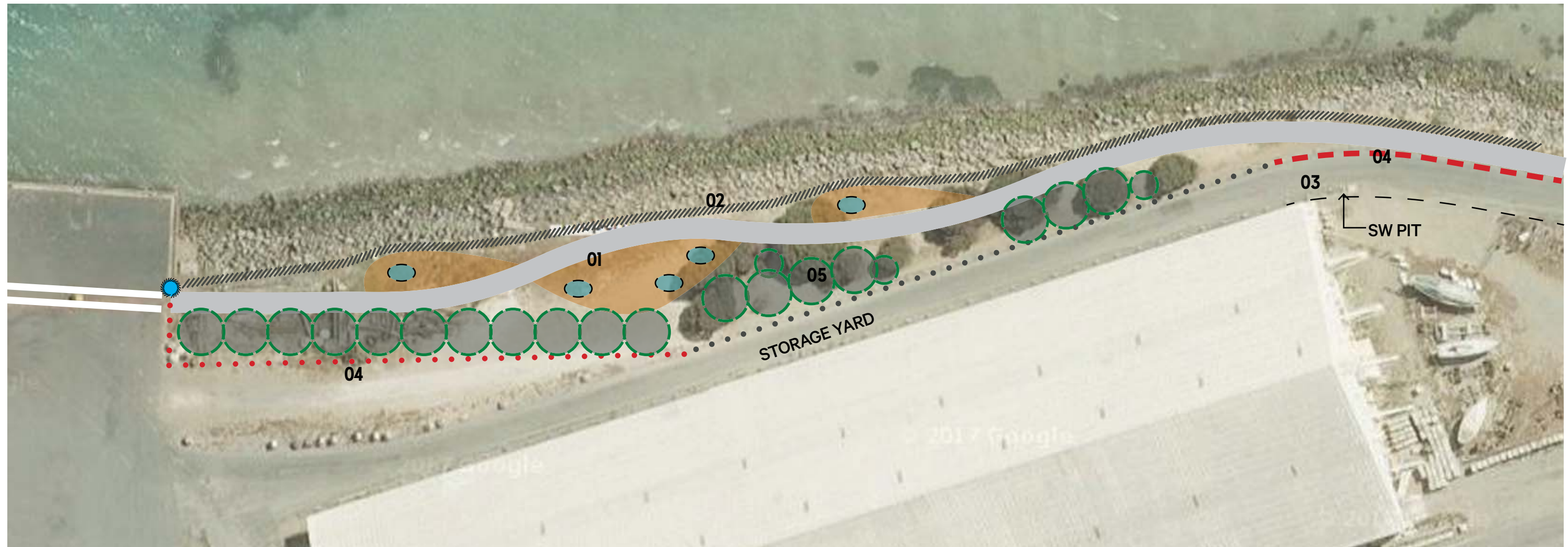
# Section - 03

## KEY ELEMENTS

- |  |  |
|--|--|
| <p><b>01</b> NEW TRAIL SURFACE WITH SEATING NODES. EXISTING VEGETATION REMOVED/MANAGED.</p> <p><b>02</b> IMPROVEMENTS TO THE ROCK REVETMENT AS NECESSARY,</p> <p><b>03</b> INVESTIGATE OPPORTUNITIES TO MAKE MINOR ALTERATIONS TO ROAD ALIGNMENT AND STORMWATER INLET TO ENABLE WIDER TRAIL THROUGH 'PINCH POINT'.</p> <p><b>04</b> NEW BARRIER/BOLLARDS TO SEPARATE VEHICLES AND PEDESTRIANS.</p> <p><b>05</b> MANAGEMENT OF PLANTING</p> | <p> NEW TRAIL SURFACE</p> <p> COMPACTED RUBBLE SURFACE</p> <p> PEDESTRIAN CROSSING</p> <p> IMPROVEMENTS TO ROCK REVETMENT</p> <p> EXISTING BOLLARDS</p> <p> NEW BOLLARDS</p> <p> NEW PIPE RAIL BARRIER</p> <p> POSSIBLE RE-USE OF INDUSTRIAL RELICS AS SEATS AND WAYFINDING DEVICES.</p> <p> SIGNAGE / WAYFINDING / INTERPRETATION</p> <p> ROAD REALIGNMENT - PROPOSED RELOCATION OF ROAD EDGE</p> |
|--|--|



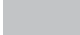






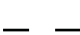

NOTE:  
NEW ROAD ALIGNMENT SUBJECT TO AB TRIPLE TRUCK TURNING MOVEMENT CONFIRMATION.





# Section - 04

## KEY ELEMENTS

- |    |   |   |
|----|---|---|
| 01 | NEW TRAIL SURFACE. IMPROVEMENTS TO THE ROCK REVETMENT AS NECESSARY,   |  NEW TRAIL SURFACE                                   |
| 02 | INVESTIGATE OPTIONS FOR WIDENING THE EXISTING BRIDGE ACROSS THE FUEL PIPELINE.  |  BRIDGE (EXISTING)                                   |
| 03 | NEW TRAIL SURFACE. RETAIN EXISTING CONCRETE PLINTH ON BOUNDARY. REPLACE EXISTING CYCLONE FENCING IN POOR CONDITION TO STORAGE YARD IF REQUIRED OR REMOVE. |  IMPROVEMENTS TO ROCK REVETMENT                      |
|    |   |  NEW BOLLARDS  |
|    |   |  NEW PIPE RAIL BARRIER                               |
| 04 | NEW NODE AT END OF JETTY WITH SEATING AND INTERPRETIVE / WAYFINDING SIGNAGE. SMALL MEETING/COLLECTION POINT WITH VIEWS.                                   |  NEW RECYCLED JETTY TIMBER UPSTANDS / SEATING        |
| 05 | MAKE CONNECTION TO THE TRAIL ESTABLISHED EAST OF THE WHARF PRECINCT.  |  SIGNAGE / WAYFINDING / INTERPRETATION               |
| 06 | INVESTIGATE RELOCATING EXISTING CHAINMESH FENCING IN ORDER ACHIEVE A WIDER TRAIL  |  ROAD REALIGNMENT - PROPOSED RELOCATION OF ROAD EDGE |
|    |   |  NEW CHAINMESH FENCING (WITH GATES) TO STORAGE YARDS |



NOTE:  
NEW ROAD ALIGNMENT SUBJECT TO AB TRIPLE TRUCK TURNING MOVEMENT CONFIRMATION.







**VIEW 06 EXISTING**





**VIEW 06 PROPOSED**





**VIEW 07 EXISTING**





**VIEW 07 PROPOSED**



# Core Materials

CONCRETE



RECYCLED TIMBER



GALVANISED STEEL



CORTEN STEEL



PAINTED STEEL



HOTMIX



RECYCLED TIMBER



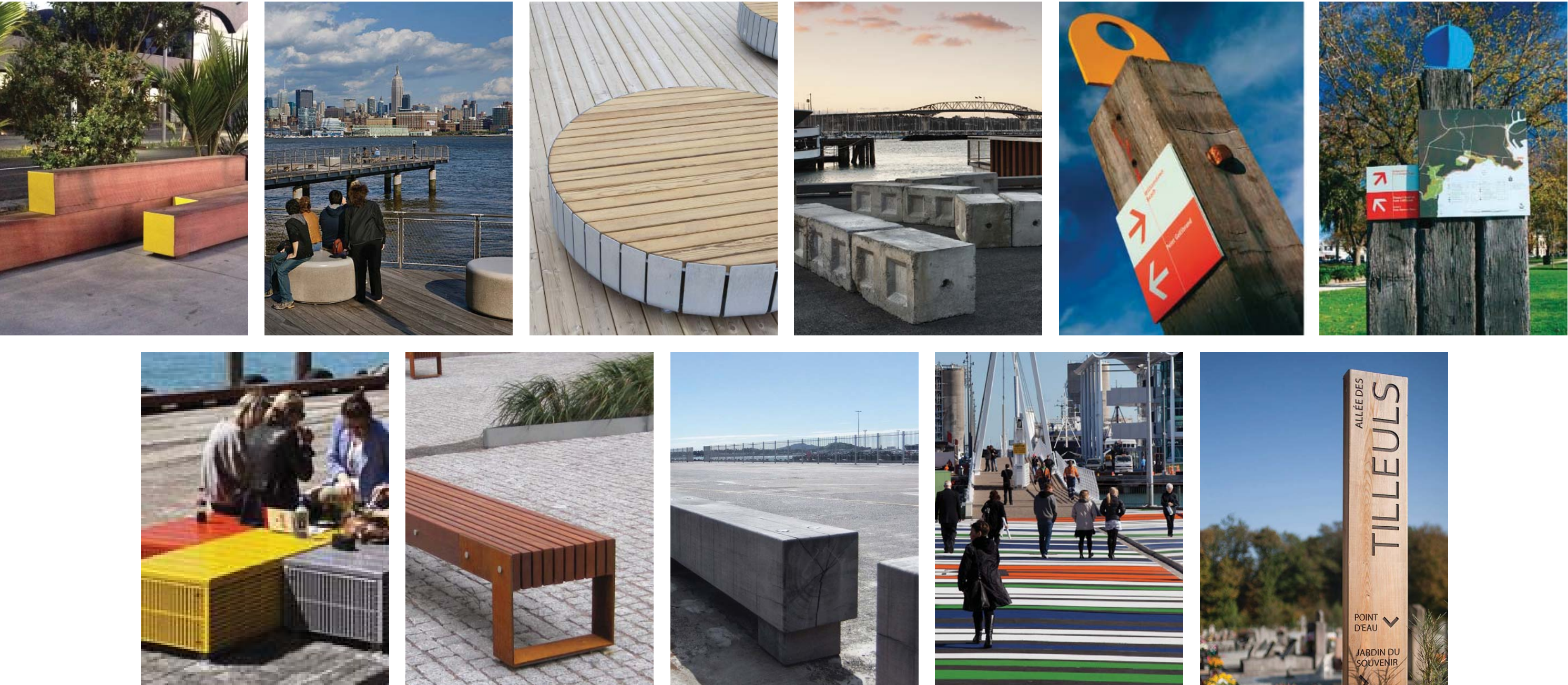
RECYCLED / PRECAST CONCRETE



LINEMARKING

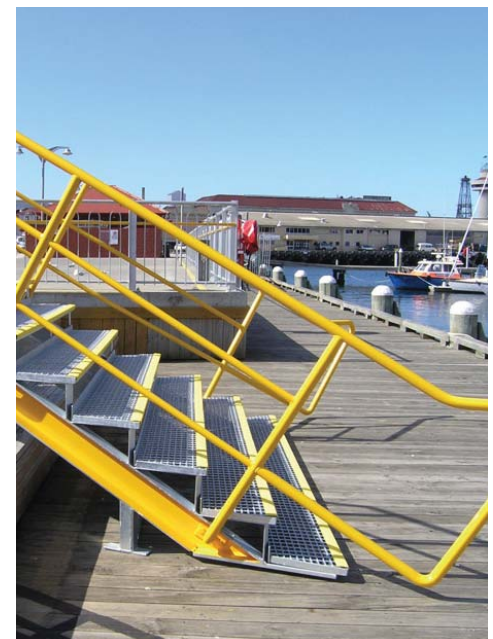
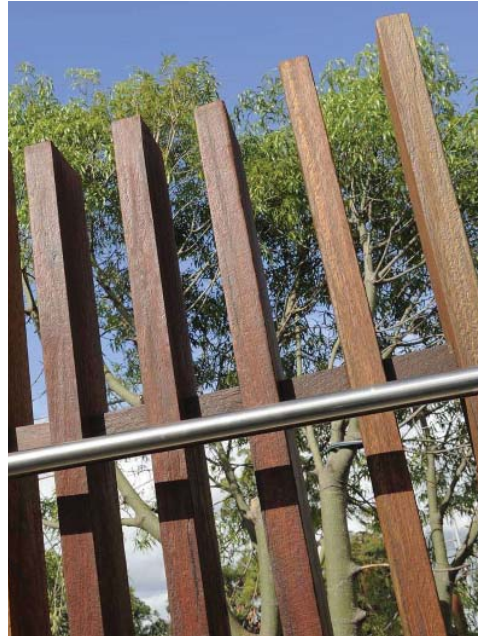


# Furniture & Elements



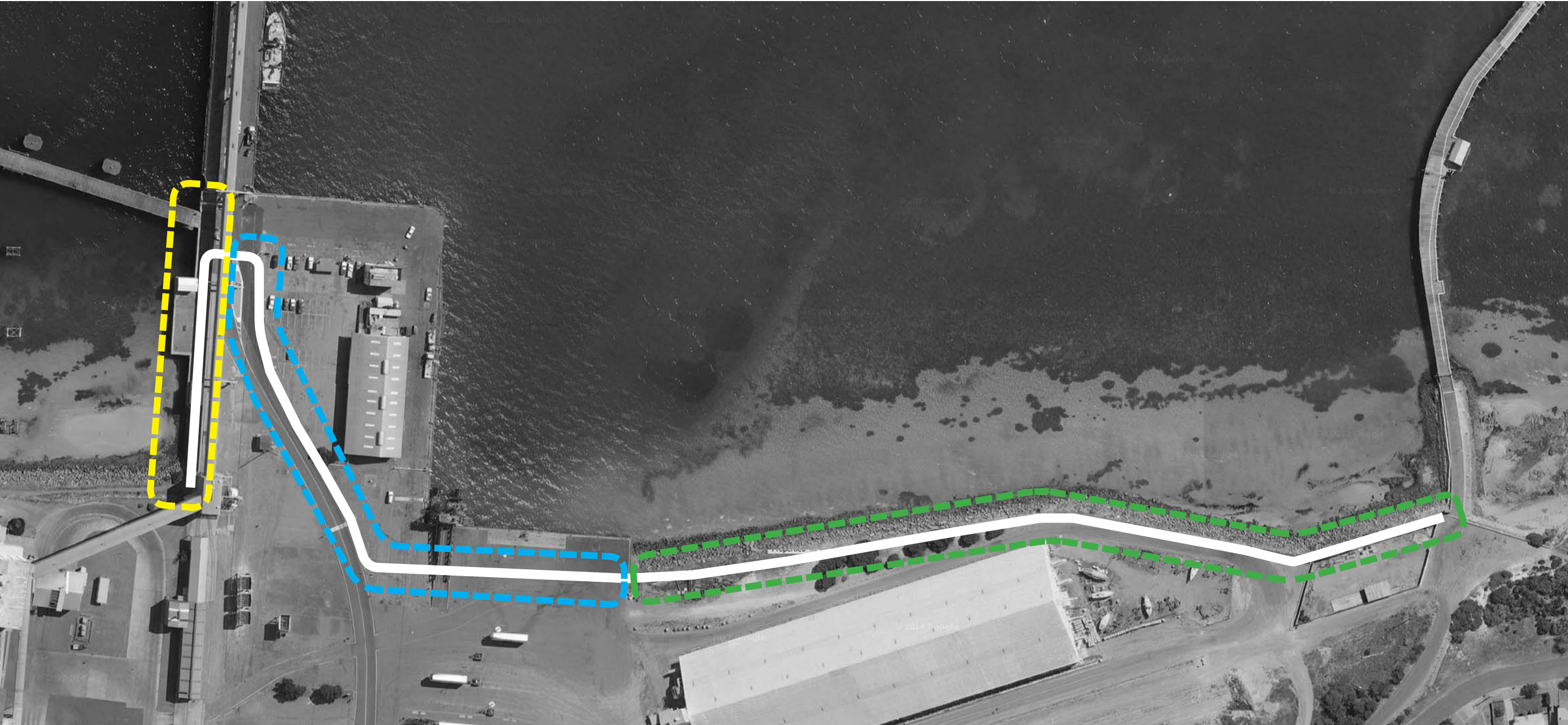


# Fencing & Barriers








# Lighting



**KEY**

-  NEW PEDESTRIAN LIGHTING INTEGRATED INTO SCREEN OR MOUNTED TO OVERHEAD GANTRY. NEW LIGHTING TO SHELTER/VIEWING AREA
-  UTILISE EXISTING LIGHTING WHERE POSSIBLE. PROVIDE SUPPLEMENTARY POLE TOP LIGHTING AS REQUIRED
-  NEW PEDESTRIAN POLE TOP LIGHTING (NO EXISTING LIGHTING UNTIL THE START OF THE REFUELLING JETTY)

NOTE - LIGHTING REQUIREMENTS + CLASSIFICATIONS SUBJECT TO DETAILED DESIGN

ALL NEW LIGHTING TO UTILISE LED TECHNOLOGY. POSSIBLE USE OF 'SMART CITY' INTEGRATION SUBJECT TO FURTHER INVESTIGATIONS



# oxygen<sup>®</sup>

People, nature and space.

Oxygen Pty Ltd  
98-100 Halifax Street  
Adelaide SA 5000