

Date —  
October 2020

Project —  
18.050

# Puckridge Park Port Lincoln

Concept Plan

**oxigen**

Oxygen Pty Ltd  
98-100 Halifax Street  
Adelaide SA 5000

T +61 (08) 7324 9600  
design@oxigen.net.au  
oxigen.net.au

1.

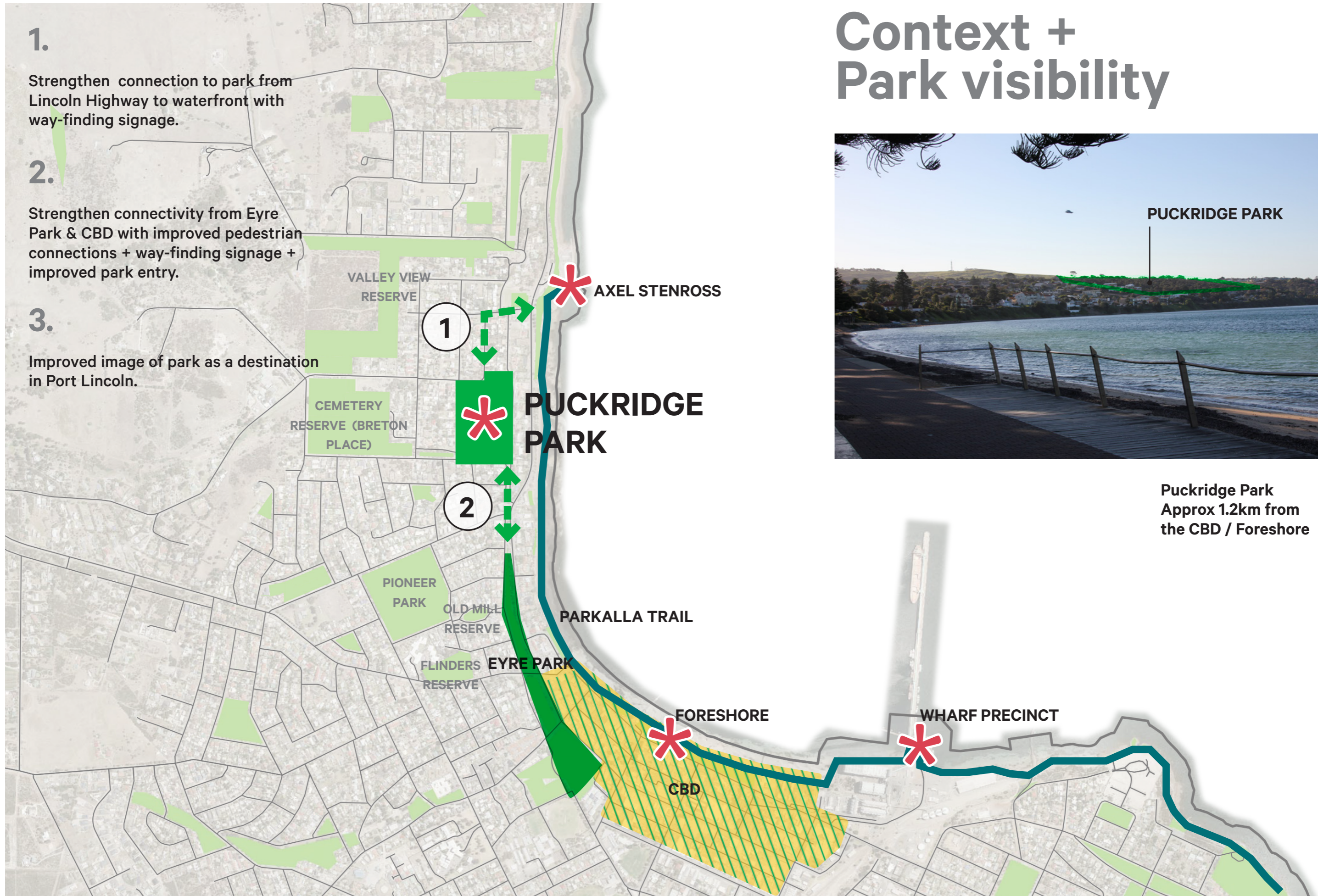
Strengthen connection to park from Lincoln Highway to waterfront with way-finding signage.

2.

Strengthen connectivity from Eyre Park & CBD with improved pedestrian connections + way-finding signage + improved park entry.

3.

Improved image of park as a destination in Port Lincoln.



# Context + Park visibility



PUCKRIDGE PARK

Puckridge Park  
Approx 1.2km from  
the CBD / Foreshore



# Park Qualities + Attractors

**Native vegetation, spectacular views  
and varied recreational opportunities**



## ENVIRONMENT

- Best practice re-vegetation techniques
- ‘Ecological zones’ and habitat corridors - reinforce the native plantings as a major attractor to the park
- Nurture and reinforce the natural setting and topography of the park

- Connection to broader Port Lincoln movement and open space network
- Defined park entries
- Hierarchy of internal trails + pathways
- Orientation spots. Interpretive + wayfinding signage
- Accessibility



## MOVEMENT



## ACTIVITIES

- Diversity of recreational experiences
- Nature, adventure and exploratory play - for young and old
- Social, cultural and physical activities - a series of flexible spaces
- Infrastructure to support the park’s uses
- Express the layers of park history and endeavour (Rotary)

# Park Objectives

# Existing Park Infrastructure - Opportunities

## CARPARK

Informal hotmix carpark adjacent main viewing platform with panoramic views towards Boston Bay and City.

- Formalise carpark surface and layout in short to medium term.

## SHELTERS

Access to existing shelters to be safe + equitable for people with disabilities, older people + young families with pushers. Existing shelters include Rotary commemorative and memorial plaques / messages.

- Renew shelters in short to medium term.
- Consolidate + integrate Rotary commemorative plaques / messages into new park design in contemporary ways, in close consultation with Rotary.

## STONEWALL / MEMORIAL

Existing stone wall / memorial (containing PL Puckridge's ashes) is damaged in sections.

- Renew memorial - in close consultation with Rotary, integrate memorial into new design of viewing platform and main park orientation point (in similar location to current viewing platform).

## PRESIDENTS' WALK PLAQUES

Approximately 70 brass plaques on small concrete plinths located at intervals within the park.

- Consolidate location of brass plaques into park orientation point – possibly incorporate plaques into low wall, in close consultation with Rotary.

## LIGHTING

Existing pole tope lighting and lighting within existing shelters provides lighting to existing picnic areas in the central area of the park.

- Renew existing lighting in short to medium term to suit proposed park layout.
- Incorporate new LED lighting + consolidate in central area of the park servicing the picnic area + edge of carpark.
- No lighting to trails.

## SEATS, PICNIC SETTINGS + BINS

The park would benefit from replacement + improvement of current park furniture.

- Implement a new suite of park furniture including seating, drinking fountain, bins + picnic settings.
- Place new furniture to suit the uses of the proposed park layout including viewing areas + picnic / BBQ areas.
- Locate bin in central location adjacent car park easily accessible for bin collection vehicles.

## PARK SIGNAGE (WAYFINDING + INTERPRETATION)

Considerable amount of existing Rotary 'branding' within the park. Park lacks wayfinding and overall consistent park image. Major opportunity to improve promotion of the park as a destination within Port Lincoln.

- Declutter park + remove disused signage in short term.
- Develop park signage suite (building on City of Port Lincoln image) in medium term that coordinates - entries, public information, trails network / park map.
- Consider QR code signage for interpretation.
- Rationalise the number + location of Rotary signage and elements and incorporate messaging into new park signage suite and public art opportunities.
- Opportunity to incorporate Rotary layers of history and endeavour through contemporary design of major park orientation point and at lookouts.



# Existing Park Infrastructure - Opportunities

## ENTRY WALLS / GATES

Significant stone entrance walls built by Rotary - incorporate Rotary and Council branding.

- Maintain existing main entry walls.

## FENCING

Existing perimeter and internal fencing is timber post and rail.

- Consolidate + upgrade through asset renewal with hardwood timber post and galvanised rail style fence.

## TRAILS

Existing network of gravel trails throughout the park. Existing trails are non complying due to topography of the site.

- Consolidate + simplify extent of the gravel pathways network.
- Incorporate signage that defines the various walking trails + interpretation.
- Upgrade pathways to use local Port Neill product to suit the setting of the park (rather than DK Blue Gravel).
- Consider incorporation of an 'accessible' pathway around central area linked to carparking + amenities.

## VEGETATION

Puckridge Park is a significant community flora reserve for the community.

- Retain + enhance the local virgin scrub.
- Continually review + manage vegetation to enhance the setting and ecological value.
- Incorporate new native planting.

## BARBEQUES

Existing barbeques in good working condition. Existing concrete bases to some barbeques + picnic settings are trip hazards.

- Consider renewal of barbeque surrounds.
- Barbeques to remain in existing locations in short term. Render brick and / or clad with steel.
- Renew barbeques to suit park development over time in medium to long term.

## PLAY EQUIPMENT

Parts of existing playground equipment are deteriorating + hazardous.

- Redevelop playground to regional level nature-play facility to enhance Port Lincoln's natural environment in short term.

## TOILETS

Existing toilet facility in need of refurbishment.

- Maintain existing toilet in short term.
- Consider construction of new toilet to include disability access toilet in similar location to suit existing service infrastructure in medium to long term.



# Existing Aerial

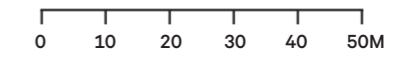
N ←



# Concept Plan



N ←



## KEY MOVES

- E Park entry
- Key orientation / entry markers
- 1. Existing car parking re-organised
- 2. New car park + bus drop off
- 3. New carpark
- 4. Picnic + BBQ
- 5. Toilet / amenities
- 6. Orientation spot / interpretation
- 7. Lookout
- 8. Lower platform
- 9. Lawn
- 10. Adventure play
- 11. Nature play
- 12. Re-organised paths
- 13. Outdoor rooms



# Park Central Area



N ←

0 5 10 15 20M

## KEY MOVES

- Key orientation / entry markers
- 1. Existing park entry
- 2. Existing car parking re-organised
- 3. Car parking, bus drop off + park entry
- 4. Picnic + BBQ
- 5. Toilet
- 6. Orientation spot / interpretation / park timeline
- 7. Lookout / interpretation
- 8. Stepped pathway to lower platform
- 9. Lawn
- 10. Adventure play
- 11. Nature play

# Existing - Top Terrace



# Proposed - Top Terrace



## PICNIC / BBQ FACILITIES



## ACTIVITIES LAWN



## PAVILION



## TRAILS



## VIEWING PLATFORM

# What Puckridge Park Could Be

# ADVENTURE, NATURAL + EXPLORATORY PLAY



**OUTDOOR ROOMS, TERRACES**

**NATIVE VEGETATION**

## LAWNS, PUBLIC ART + PLAY



## PARK FURNITURE



## NATURE PLAY



## WATERPLAY



## NATURAL SETTING

**TRAILS**



**ORIENTATION SPOT**



**SHELTER**



**INTERPRETATION**



**VIEWING PLATFORM**



**CARPARKING**

**AMENITIES**



# Layers of Interpretation - Park history, art + culture



## INTEGRATION WITH LANDSCAPE ELEMENTS - PAVING, WALLS, FENCING

- Key orientation points - stories and key messages about the parks history.
- Puckridge memorial wall.



## PUBLIC ART INSTALLATIONS

- Signage elements.
- Play elements.
- Integrated shelter design.



## COMMEMORATION

- Consolidation of brass plaques
- Park orientation point – opportunity to incorporate plaques into low wall, in close consultation with Rotary.



## ROTARY ENDEAVOUR

- Integration through further consultation & collaboration to develop -
- Integrated signage + wayfinding.
  - Stories of the park.



## BARNGARLA, PARNKALLA

- Integration through further consultation & collaboration to develop -
- Stories of the park / Port Lincoln
  - Key theming + messages
  - Links to Parnkalla Trail

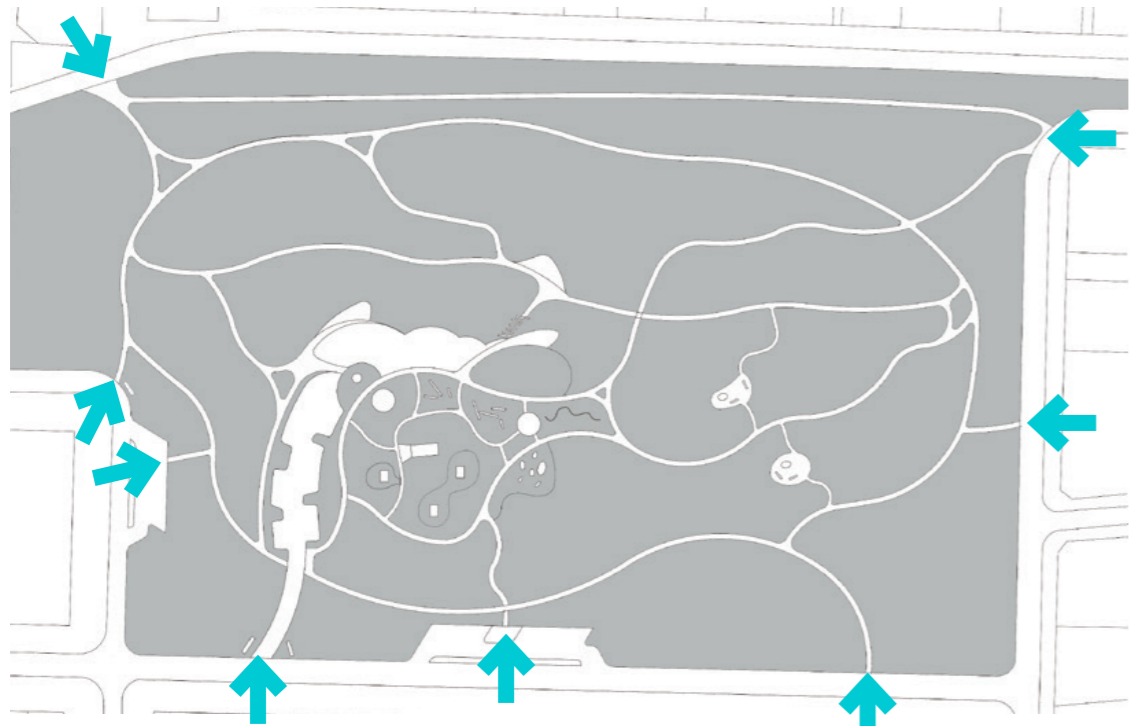


## ENVIRONMENTAL

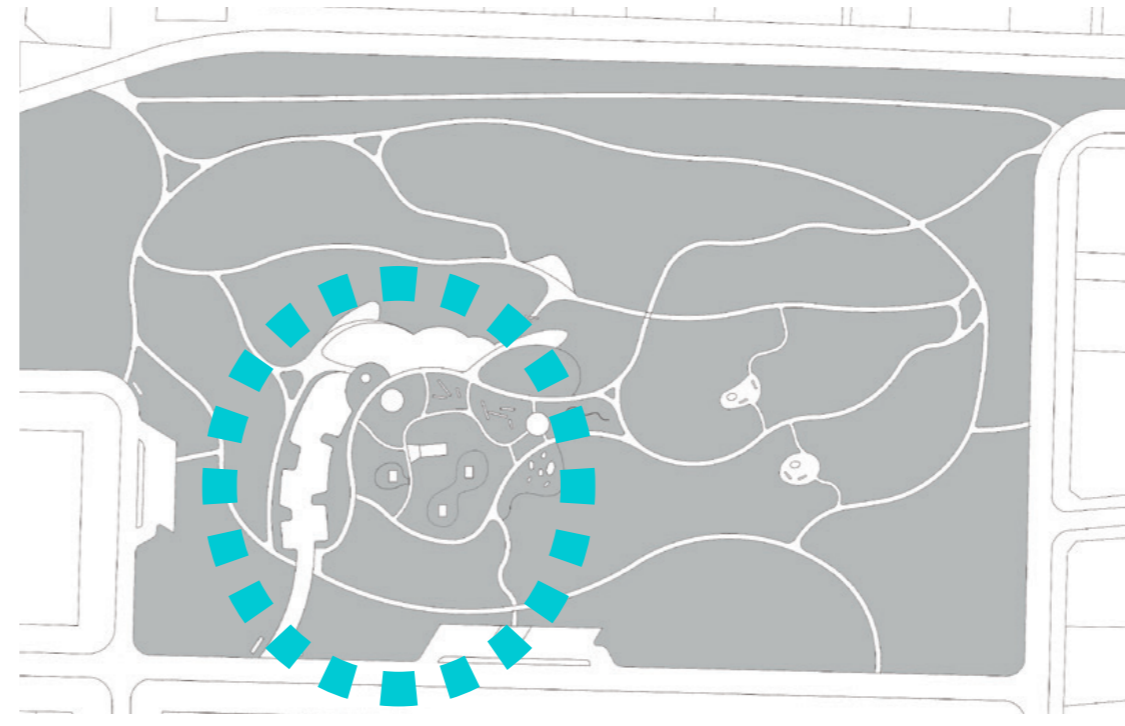
- Outdoor Rooms as special gardens:
- Local indigenous species display plantings (of Port Lincoln).
  - Bush foods.
  - Climate/waterwise demonstration plantings.



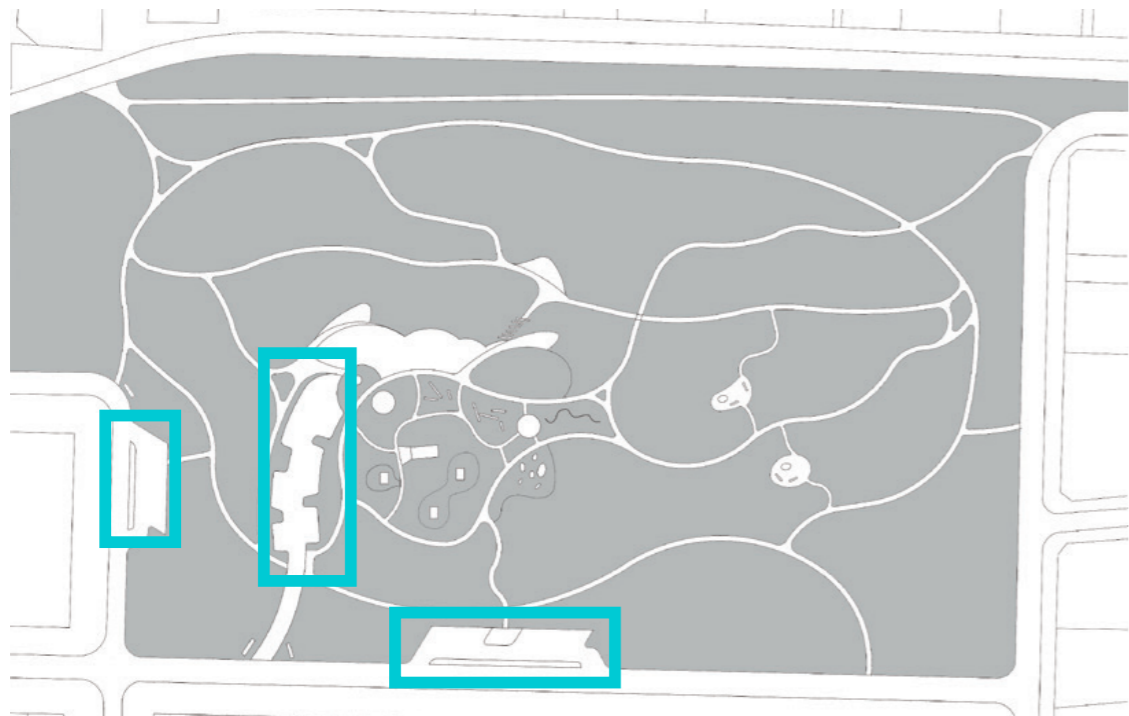
# Movement + Access



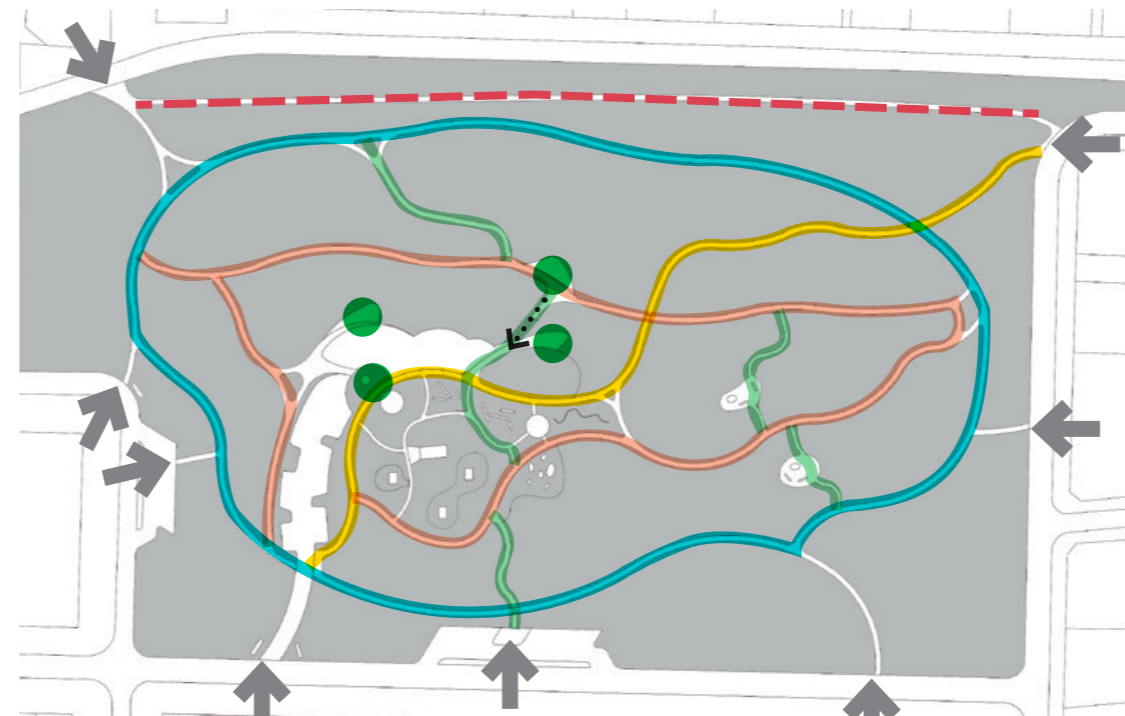
**ENTRIES**



**ACCESSIBLE AREA**



**CARPARKING**



**TRAILS + CIRCULATION**



# oxigen<sup>®</sup>

People, nature and space.

Oxigen Pty Ltd  
98-100 Halifax Steet  
Adelaide SA 5000

T +61 (08) 7324 9600  
design@oxigen.net.au  
oxigen.net.au